

## Epic Ambulatory View Only Access Course for Colleagues without *The Learning Curve* (TLC)

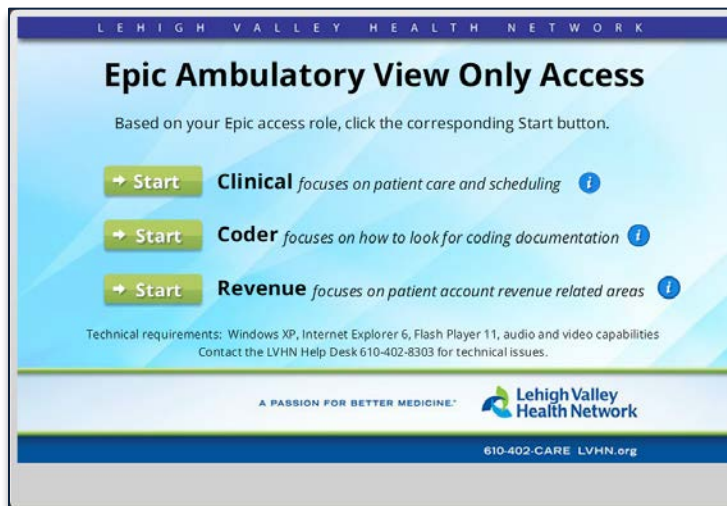
### Minimum Computer Requirements

You must have access to the LVHN Intranet and a **LVHN Username** (i.e., C1234).  
Windows XP, Internet Explorer 6 , Flash Player 11, audio and video capabilities required.



If you are accessing LVHN remotely using  
**Web - SSO** please begin on Step 4.

1. Click this link (or copy and paste into your Windows Internet Explorer):  
[http://lvhelearning2.lvh.com/Remotecontent\\_prod/Data/EpicVOA/story.html](http://lvhelearning2.lvh.com/Remotecontent_prod/Data/EpicVOA/story.html)
2. From the Epic Ambulatory View Only Access menu, *select your Epic role*.



3. After successfully passing the final assessment with an 80% or higher score, click the **Register for Epic View Only Access** button. Complete the form and confidentiality question.  
*Successful submitted registrations will receive the following message:*

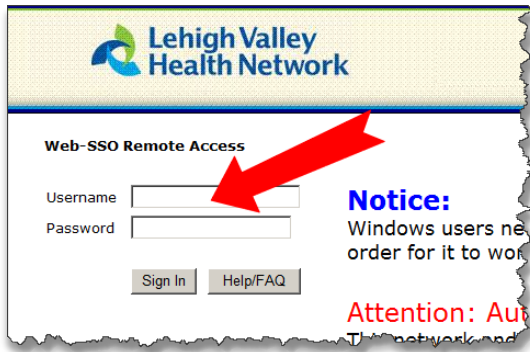
**Congratulations, you have now completed the Epic View-Only Access course.**

Your information will be sent to the LVHN Epic Security team to process your Epic view-only access.

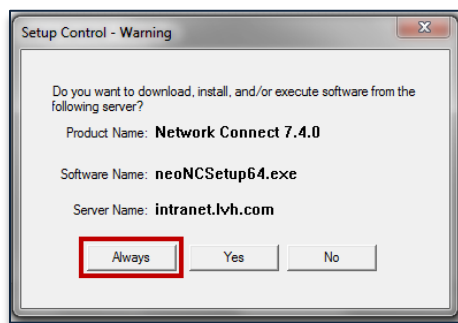
Close this Internet browser window to exit the course.

These steps are only for users accessing LVHN Intranet remotely using Web-SSO.

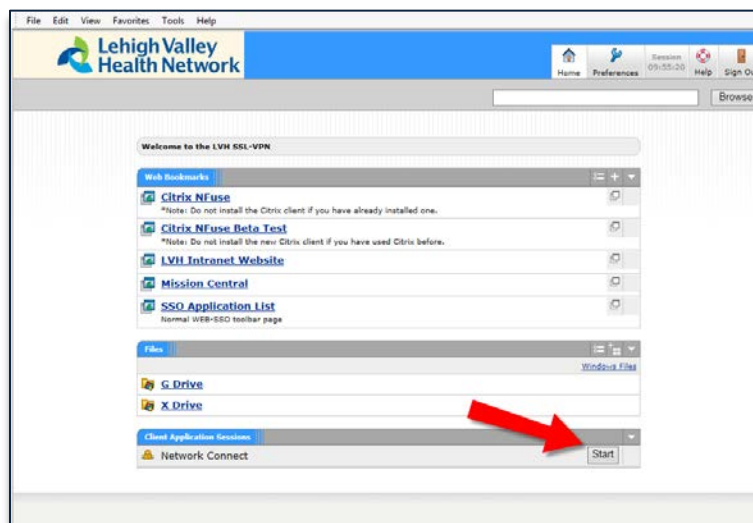
- Using **Windows Internet Explorer** open <https://intranet.lvh.com>
- Enter your LVHN Username (i.e., C1234) and LVHN Password. Click [**Sign In**].



- If you receive a *Setup Control- Warning*, click [**Always**].



- From the *Client Application Sessions* tab, click the [**Start**] button.



- After starting Network Connect; continue with **Step 1** of these instructions.