

## Program Objectives

- Discuss pathophysiological changes that occur in the morbidly obese patient.
- Discuss the treatment options for the neonatal patient who fails conventional ventilator management.
- Review the current literature and treatment options regarding the COPD patient.
- Describe the palliative care process and how the respiratory therapist can assist in the process.
- Identify treatment options for the person with difficulty mobilizing secretions.
- Describe how mechanical ventilators utilize software to titrate support through a closed-loop system.

Directions:  
**Holiday Inn Conference Center**  
**I-78 & Rt 100**  
**Allentown, Pennsylvania**

**From Harrisburg:**

Take Route 22 east to exit 49A. (Route 100 South). Refer to common directions below.

**From Philadelphia:**

Take the Northeast extension of the PA turnpike Route 476 North to exit 56. Follow signs for Route 22 West/I 78 West towards Harrisburg. Follow I-78 West to exit 49A (Route 100 South). Refer to common directions below.

**From New Jersey:**

I -78 West into Pennsylvania continue on I-78 West to exit 49A (Route 100 South). Refer to common directions below.

**From Reading/Lancaster:**

Take Route 222 North. Take exit Fogelsville Route 100 North. Turn left at light on to Route 100 North. Go to the fourth traffic light and make a left onto Stroh Drive. Make the first right onto Sycamore Drive and follow to the first stop sign. Bear left and the Holiday Inn is directly ahead.

**From Poconos East and Points North East of Allentown:**

Take Route 33 South to Route 22 West. Follow Route 22 To I-78 West. Stay on I -78 West to exit 49A (Route 100 South). Refer to common directions below.

**From Poconos West.**

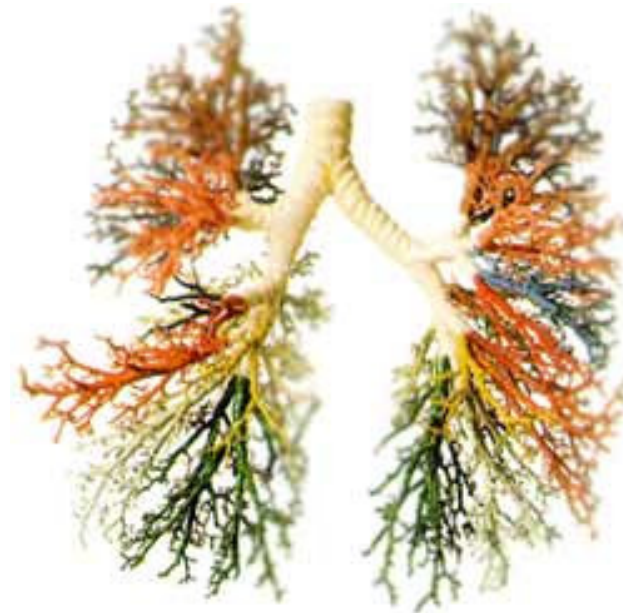
Take PA Turnpike Route 476 South to exit 56. Follow the signs to route 22 West/I-78 West to exit 49A (Route 100 South). Refer to common directions below.

**Common Directions:**

Once you are on Route 100 South you will see the Burger King on your right. Turn right immediately after Burger King and the Holiday Inn is straight ahead.

## Concepts In Respiratory Care Fall Symposium

*Thursday, September 20th, 2007*



***Holiday Inn & Conference  
Center  
Rts 100 & I-78***

***Presented by  
Respiratory Care Services***



## PROGRAM

Application has been made to the American Association for Respiratory Care for 6 continuing education contact hours for Respiratory Therapists.

- 0700 Registration**
- 0755 Welcome**
- 0800 Respiratory Management of the Morbidly Obese**  
*Ken Miller, M.Ed., RRT, NPS, AE-C*
- Ventilator Management for the Neonate that Fails Conventional Ventilator Strategies**  
*Kim Breinich, BS, RRT, NPS*
- 0900 Pathology & Prevalence of COPD— What We Know**  
*John M. Hughes, M.Ed, RRT, AE-C*
- 1000-1015 BREAK**
- 1015 Palliative Care and the Role of the Respiratory Therapist**  
*Daniel Ray, M.D.*
- 1115 Airway Clearance Techniques**  
*Mark Nystrom, RRT*
- 1215 LUNCH**
- 1315 Creating a Hospital**  
*Dan Bair, RRT*
- 1415 Closed Loop Ventilation During Weaning**  
*Drager Representative TBA*
- 1515 Evaluation & Certificate Distribution**

Presented by the  
Respiratory Care Services Department  
Lehigh Valley Hospital and Health Network

## Faculty

**Ken Miller, M.Ed., RRT, NPS, AE-C**  
Educational/Research Coordinator Respiratory Care  
Lehigh Valley Hospital

**Kim Breinich, BS, RRT, NPS**  
Staff Therapist NICU  
Lehigh Valley Hospital

**John Hughes, M.Ed., RRT, AE-C**  
Director, Respiratory Care  
Millersville University

**Daniel Ray, M.D.**  
Critical Care Intensivist, Pulmonary Critical Care  
Lehigh Valley Hospital

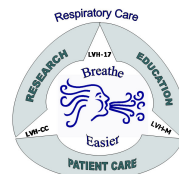
**Mark Nystrom, RRT**  
Clinical Specialist, Hill-Rom

**Dan Bair, RRT, CHE**  
Chief Operating Officer  
Westfield Hospital

**FUTURE CONFERENCE DATE:**

**May 28, 2008**

Prior to registering, check our web site for availability and then confirmation.  
[www.LVH.org/respiratory](http://www.LVH.org/respiratory)



## REGISTRATION

Name \_\_\_\_\_ Credentials \_\_\_\_\_

Home Address \_\_\_\_\_

City \_\_\_\_\_ State \_\_\_\_\_ ZIP \_\_\_\_\_

Home Phone \_\_\_\_\_

Hospital or Organization \_\_\_\_\_

Address \_\_\_\_\_

City \_\_\_\_\_ State \_\_\_\_\_ ZIP \_\_\_\_\_

Work Phone \_\_\_\_\_ Fax \_\_\_\_\_

AARC Membership # \_\_\_\_\_

E-Mail Address \_\_\_\_\_

### **Registration Information**

Limited to 350 registrants.

Advance : \$50.00 On-Site \$60.00

LVH Employees : \$35.00

Prior to registering, check our web site for availability and then confirmation.

[www.LVH.org/respiratory](http://www.LVH.org/respiratory)

**Make Checks Payable to: Lehigh Valley Hospital**

Deadline: September 7th, 2007

Includes: Continental Breakfast and Lunch

Mail to: Linda Cornman, BS, RRT-NPS  
Respiratory Care Services  
Lehigh Valley Hospital  
P.O. Box 689  
Allentown PA 18105

Registration Questions: Please Call 610-402-5762

Registration will NOT be accepted without payment, and is not refundable after September 7th, 2007.