

Health Care Career Discovery (HCCD)

HCCD is an endeavor that combines interactive classroom learning and observation in a health care setting designed to give students the opportunity to explore careers in health care first-hand. Sessions are offered on a Monday evening, from 6:00 to 8:00 pm. Each session offers interactive presentations about a specific department/unit within the hospital, an in-depth glimpse into the various careers within that department/unit, and a question-and-answer period. Each session will offer students the opportunity to sign-up to shadow within these areas of the hospital. Health Care Career Discovery is an excellent way to introduce students to the variety of career opportunities available in the health care field and to allow them to explore in detail particular areas of interest.

To register, go to:

http://www.lvh.org/lvh/Education/Education/High_School_Students|754

Or

Go to: www.lvh.org, click on "Education," then "High School Student," then "Health Care Career Discovery." Other student programs available are listed on the "High School" page.

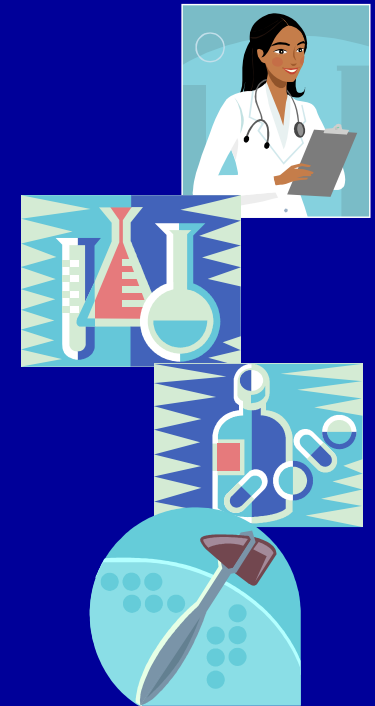
HEALTH CARE
CAREER
DISCOVERY

Exceptional Education
DIVISION of EDUCATION
LEHIGH VALLEY HOSPITAL
AND HEALTH NETWORK
for Exceptional Care

Kirsten Ryan
Medical Education Coordinator
Division of Education
1247 S. Cedar Crest Blvd., #202
Allentown, PA 18103

Phone: 610-402-2316
Fax: 610-402-2203
E-mail: Kirsten.ryan@lvh.com
Web: www.lvh.org

HEALTH CARE CAREER DISCOVERY



2008-2009





Program Requirements:

- Participants must be at least 14 years of age and have completed 8th grade.
- Submit a complete application which will include: Application with information, consent to participate, emergency information, photography consent form, acknowledgment of confidentiality form (signed by applicant and parent/guardian if under 18).
- Register for each presentation no later than one week prior. Attendance at relevant presentation prior to shadowing is a requirement.

Additional Requirements necessary to shadow:

- Submit complete application forms including Health Certification (signed by a health care professional) with TB questionnaire (if under 18) or proof of two current negative TB tests (if over 18).
- Provide one completed Confidential Reference Form (HS students only).
- Provide photocopy of picture identification (school ID, driver's license, etc.).

All Programs will take place from 6-8 pm—and are subject to change based on speaker's availability

Date	Presentation	Department	Location
9/15	Beyond Stop Drop and Roll	Burn Unit	CC
9/22	Come Meet the OR Team	OR: Pre- and Post-op	17th
10/6	Get Your CSI On	Health Network Labs	CC
10/20	Not Just Your Grandparents' Medicine	Geriatrics/ TSU/DOE	17th
11/3	Looking Beyond the Glamour of Gray's Anatomy	Residents	CC
11/17	What 5.7 Million People Don't Know	Diabetes/Endocrinology	Muhl
12/1	ER. General Hospital, House, or Hopkins?	Emergency Medicine	CC
1/12	Just Breathe	Respiratory Care	CC
1/19	Instrumental to Patient Care	Sterile Processing/Open Heart—ICU	Muhl
2/2	Patients Are a Virtue	Nursing/Professional Council	CC
3/2	Healing for Body and Soul	Social Work/Case Management/Pastoral Care	CC
3/16	What Healthcare Options are Available in My Community?	Ambulatory Services	17th
3/30	Your PRxscription for Success	Pharmacy	Muhl
4/6	The Body—Inside and Out	Plastic Surgery & Radiation Oncology	CC
4/20	The Thigh Bone's Connected to the....	Rehabilitation Services	Muhl
5/4	Contracting, Finance, Development, Professionalism	Administrative Departments	CC
TBA	Food For Thought	Nutrition and Catering	CC

CC= LVH at Cedar Crest & I-78; programs will take place in the Kasych Pavilion, ECC 6-8.
17th= LVH at 17th & Chew; programs will take place in the main Auditorium/2nd floor.
Muhl=LVH at Muhlenberg/Schoenersville Road; programs will take place in ECC B-D.

Maps of each site can be found at lvh.org and directional signs will be placed in the main lobby.