

Conference Information

Target Audience

Oncology nurses, new and experienced, social workers, and other allied health personnel who care for those with cancer

Designation Statement

It is Lehigh Valley Health Network's policy to ensure balance, independence, objectivity and scientific rigor in all of our sponsored educational programs. Faculty and all others who have the ability to control the content of continuing education activities sponsored by Lehigh Valley Health Network are expected to disclose to the audience whether they do or do not have any real or apparent conflict(s) of interest or other relationships related to the content of their presentation(s).

Lehigh Valley Health Network is an approved provider of continuing nursing education by the PA State Nurses Association, an accredited approver by the American Nurses Credentialing Center's Commission on Accreditation. Registered nurses attending the entire program and completing the evaluation tool will receive 21.7 contact hours.

Approval of this continuing nursing education activity refers to recognition of the educational activity only and does not imply ANCC Commission on Accreditation or PA Nurses approval or endorsement of any product.

Registration

Onsite registrations are welcome, but be prepared to take a little longer at the registration desk when you arrive. Cash or check is the only method of payment acceptable.

Payment

Payment must accompany this form. Registration forms received without payment will not be processed until payment is received.

Fees, Cancellations and Substitutions

Registration fee for the conference includes the educational program and any food event listed in this brochure. Refunds will be granted up to one week prior to the conference, minus an administrative fee. After that date no refunds will be granted. Lehigh Valley Health Network reserves the right to substitute faculty listed in this brochure and will provide comparable alternative faculty.

Planners, presenters have nothing to disclose.

Directions

Lehigh Valley Hospital—Cedar Crest

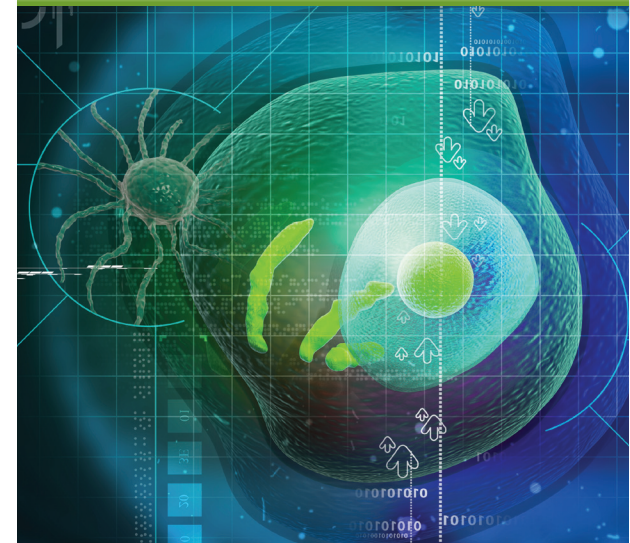
From N.E. Extension of Turnpike: Route 22 East to Route 309 South (I-78 East). Follow 309 South (I-78) to Cedar Crest Blvd. exit. Turn right from exit. Turn right at traffic light onto main entrance road to hospital. Follow signs for event parking.

From Route 22: Take Route 309 South (merges with I-78) to Cedar Crest Blvd. exit. Turn right from exit. Turn right at traffic light onto main entrance road to hospital. Follow signs for event parking.

From the South: From Route 309 North (I-78) take Cedar Crest Blvd. exit. Turn left from exit. Turn right at traffic light onto main entrance road to hospital. Follow signs for event parking.

From the West: Take I-78 East to Cedar Crest Blvd. exit. Turn right from exit. Turn right at traffic light onto main entrance road to hospital. Follow signs for event parking.

2012 Oncology Core Course



Feb. 13, 14 and 15
April 9, 10 and 23
Sept. 26, 27 and 28
Nov. 12, 13 and 14
8 a.m.–4:30 p.m.

Lehigh Valley Hospital—Cedar Crest

Kaysch Family Pavilion
1200 S. Cedar Crest Blvd.
Allentown, PA 18103

5527 - 11/2011

Program Objectives

1. Discuss cellular kinetics and the process of carcinogenesis.
2. Identify the three most prevalent cancers in men and women.
3. Identify two hereditary cancer syndromes and potential medical management implications.
4. Discuss the role of nutrition in the management of treatment-related symptoms and cancer cachexia.
5. Discuss three key components of developing a treatment plan.
6. Explain the principles of the five different types of radiation therapy delivery.
7. Describe the diagnostic process, treatment planning and quality-of-life issues for persons diagnosed with gynecologic cancers, breast cancer, colon cancer, lung cancer, prostate cancer, leukemia and lymphoma.
8. Describe the role of palliative care in managing the person with a cancer and his or her family.
9. Identify antineoplastic and biotherapeutic agents used to treat cancer.
10. Describe three different classifications of medications utilized to manage symptoms and improve quality of life in person with cancer.
11. Discuss the role of the nurse in identifying and supporting patient needs related to psychosocial, spiritual and sexuality.
12. Identify four sources of pain and specific word descriptors for each.
13. Identify three types of oncology emergencies and two nursing considerations for each.
14. Identify at least five side effects and management strategies associated with cancer treatment.
15. Discuss effective communication strategies for communicating with the patient and family in various parts of the illness trajectory.

Conference Agenda

Day 1

8–9:15 a.m.	Introduction to Pathophysiology of Cancer
9:15–9:45 a.m.	Cancer Epidemiology
9:45–10 a.m.	Break
10–11 a.m.	Diagnostic and Treatment Overview
11 a.m.–noon	Nutrition in the Oncology Patient
Noon–12:30 p.m.	Lunch
12:30–1:15 p.m.	Breast Cancer
1:15–2 p.m.	Radiation Therapy Overview
2–3 p.m.	Cancer Genetics
3–3:15 p.m.	Break
3:15–4:15 p.m.	Communicating With Patients and Families
4:15–4:30 p.m.	Question and Answer

Day 2

8–9:15 a.m.	Pharmacologic Overview
9:15–10 a.m.	Palliative Pharmacology
10–10:15 a.m.	Break
10:15–11 a.m.	Prostate Cancer
11–11:45 a.m.	Lung Cancer
11:45 a.m.–12:30 p.m.	Lunch
12:30–1:15 p.m.	Colon Cancer
1:15– 2 p.m.	Leukemia
2–2:15 p.m.	Break
2:15–3:15 p.m.	Lymphomas
3:15–4:15 p.m.	Survivorship
4:15–4:30 p.m.	Question and Answer

Day 3

8–9 a.m.	Gynecologic Cancers
9–9:45 a.m.	Pain Management
9:45–10 a.m.	Break
10 a.m.–noon	Oncology Emergencies
Noon–1 p.m.	Lunch
1–3 p.m.	Symptom Management
3–3:15 p.m.	Break
3:15–4:15 p.m.	Palliative Care
4:15–4:30 p.m.	Question and Answer

Note: schedule is subject to change

Registration Form

2012 Oncology Core Course

Lehigh Valley Hospital—Cedar Crest, Kaysch Family Pavilion, Medical Imaging of Lehigh Valley Conference Center, rooms 6 and 8

REGISTRATION DEADLINE: 14 days prior to first day of course
You will receive e-mail confirmation 1 week prior to course with room location and additional details.

Course Date Attending: Check one:

- Feb. 13, 14 and 15 Sept. 26, 27 and 28
 April 9, 10 and 23 Nov. 12, 13 and 14

Name _____

Affiliation/Employer: _____

If LVHN: User ID _____

If Non-LVHN, E- Mail (required for registration confirmation) _____

Address _____

City/State/Zip _____

Phone _____

Please check one:

- RN MD DO SW Pharm Resp
 Resident Other _____

Registration Fee: \$270

LVHN employees: Free to all employees

Registrations can be made by calling 610-402-0501, writing a check payable to Lehigh Valley Health Network and mailing it to:

Cancer Support Services

1240 S. Cedar Crest Blvd., Suite 405
Allentown PA 18103

Special Needs

- I will need assistance.
 I have special dietary requirements.
 Please include me on your CE activity mailing list.